

## Testing:

Once connected to the 240V UPS backup mains supply, ensure the UPS unit has been allowed to charge. Conduct the following tests:

- For the first test, the lamp must remain illuminated for at least 2 hours after disconnection from the mains supply with the UPS running from the battery.
- Subsequent tests require the unit to illuminate for at least 90 minutes. The results of all tests are required to be recorded in a service logbook, which is to be kept on-site at all times. If the unit fails to remain illuminated for the requisite time, remedial action must be taken to repair the situation and once completed, the unit must pass a subsequent test. For more specific information, please refer to the current edition of the AS 2293.3 Standard.

## Ultrablade Maintenance:

### LED Lamp Replacement:

- Use only the LED Strip recommended in the Spares Parts list of this instruction.
- Remove the screw holding the driver PCA. Remove the PCA.
- Remove the 4 screws holding the battery bracket. Remove the bracket.
- Disconnect the signal cable from LED strip.
- Remove 4 self-tapping screws and unclip the LED strip.
- Install the new LED strip following the above procedure in reverse.

### Trouble Shooting:

Below are a list of common problems and their possible causes.

**Fault: The Status LED indicator and main lamp is not illuminated.**

Check: A.C. is connected and is turned on.

**Fault: Lamp does not illuminate in emergency mode.**

Check: A.C. is connected.  
Lamp is correctly inserted.  
UPS battery condition.

## Rated Emergency Lumen Output in accordance with AS2293.1, not applicable for –TH (theatre) version (refer to spacing tables for installation positions):

Refer to the Technical Label for classification information.

## Warranty:

For Product Warranty information and Terms and Conditions of Sales please refer to our website <http://clevertronics.com.au/terms-conditions-sale-australia-nz/>



# L10™ Ultrablade Pro Surface Mount LED Exit Uninterrupted Power Supply Installation & Maintenance Instruction Leaflet



**Victoria (Head Office & Manufacturing)**  
Website: [www.clevertronics.com.au](http://www.clevertronics.com.au)  
Email: [info@clevertronics.com.au](mailto:info@clevertronics.com.au)  
Phone: +61 3 9559 2700

**New South Wales**  
Phone: +61 2 8805 6400

**Queensland**  
Phone: +61 7 3442 9700

**South Australia/Northern Territory**  
Phone: +61 8 8301 8800

**Western Australia**  
Phone: +61 8 9207 0000

**New Zealand**  
Phone: +64 800 548 448

## Models:

### Testing:

Manual Test  
DALI-2

## LUBPRO-SM-ww-vv-xx-yy-zz-UPS

xx = Blank  
xx = D2

### Options:

Theatre  
Rod Suspended  
Special Sign  
Vertical  
Black

ww = TH  
vv = RS  
yy = SP  
yy = V  
zz = BLK

## Spare Parts:

8002178 – PCA: UBP LED strip PCB Assy  
8002343 – PCA: LUBPRO CT10142-L9 6C40 UPS

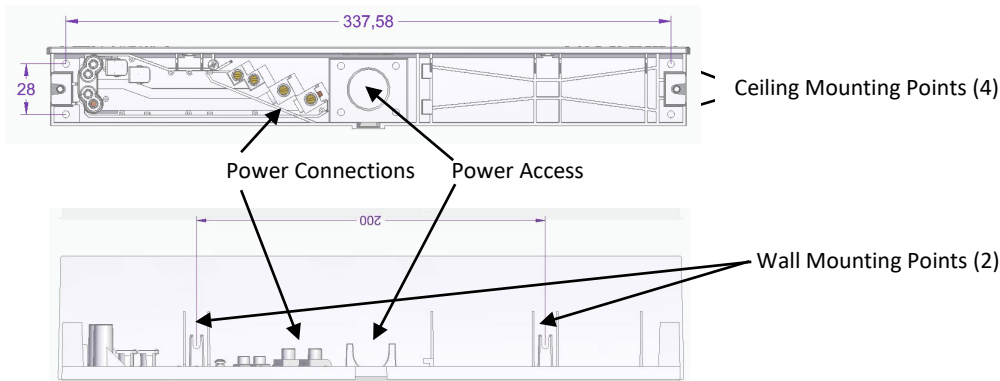
## Important:

It is illegal for anyone, except for a licensed electrician to install or maintain this product. Before installation, ensure that the electricity supply has been switched off and isolated. Installation must be carried out in accordance with the relevant Australian and International Standards.

## Installation:

The L10 Ultrablade Pro Surface Mount LED Exit (LUBPRO-SM-UPS) is a surface mount fitting. The LUBPRO-SM-UPS can be attached directly to any solid surface. Please follow the steps below to install the LUBPRO Exit:

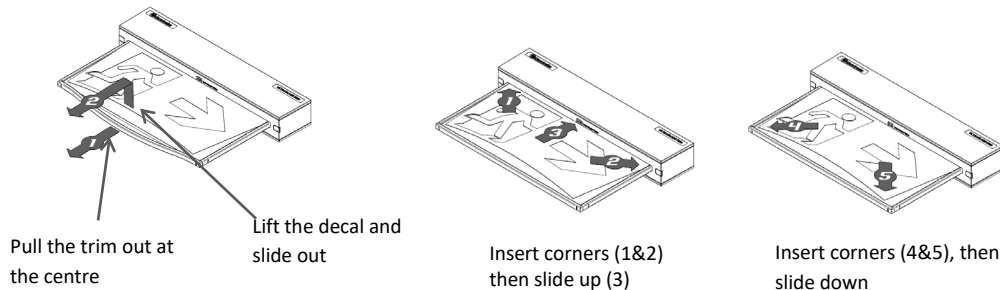
- Open the fitting using the 2 screws on either side of the blade.
- Locate the mounting surface.
- Drill holes in the mounting base to suit the mounting method, Ceiling or Wall (see images below).
- Use the mounting bracket to mark-out the mounting holes for Ceiling or Wall Mount.
- Drill power access hole as required.
- Mount the fitting using appropriate fixings.
- Route the power to the mains connection and connect the 240VAC supply.
- Attach the blade assembly to the bracket and tighten the 2 mounting screws.
- Apply power to the fitting and test.



## Changing EXIT Legend Inserts:

The Ultrablade Pro Exit comes with an assortment of standard legends.

1. To remove the legend, grasp the centre of the bottom trim piece and pull down slightly to expose the legend edge. See photo.
2. Grasp the bottom edge of the legend and slide the existing legend out of the blade, while working the edges out along the sides.
3. Slide the new legend into the blade, ensuring to fit the edges into the sides then slide the legend to the top of the blade. Insert one bottom corner then the other. Slide the legend down into the bottom trim.



## DALI 2 EM Option

Luminaires with part numbers having -D2 are fitted with DALI 2 certified modules (nodes) that facilitate connection and integration to 3rd Party Lighting Control Systems. Before installing the fitting please confirm that the Lighting Control System has the capability to monitor DALI Emergency Luminaires. The fitting will be addressed and configured into the control system by the Lighting Control System Commissioning Technicians and not Clevertronics

State	LED Operation
Commissioned/ Un-commissioned	LED on Solid (Green)
Emergency Light Test in progress	LED flashes at 1s On (Yellow) & 1s Off
"IDENTIFY COMMAND"	Lamp and Status LED Flash for 30 seconds

A 2-way "figure 8" cable and terminal block facilitates the connection to the DALI network OR a 5/6way "structured wiring system" lead and plug facilitating the power and DALI connection. DALI connections are marked as Da Da.

To confirm operation of the fitting the Lighting Control System can only use the status query type command. To "test" the sign this status query will need to be synchronised with the formal test of the UPS from its battery source. The sign will report a fault if the LED lamp bar is not illuminated.

**DO NOT run a Start Function Test or Start Duration Test command.** If either of these is run, the fitting will go into test mode and the fitting will switch off as it will be internally disconnected from main power and there is no battery, so the LED lamp bar won't run – the unit will report a failed test. This condition cannot be rectified, and the fitting will report this forever as it can never pass a test of this type.

## UPS Operation Wiring and Connecting arrangements

### 240V AC, Static Inverter and UPS Applications

